



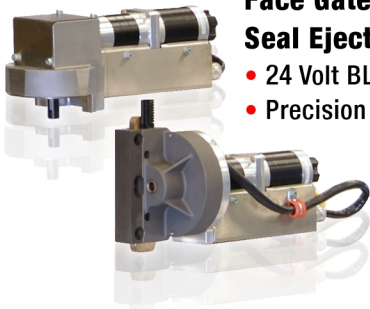
**Performance
Ahead of its Time**

Modular Design Means 247 Reliability

The New Standard of High Performance. Everything has changed.

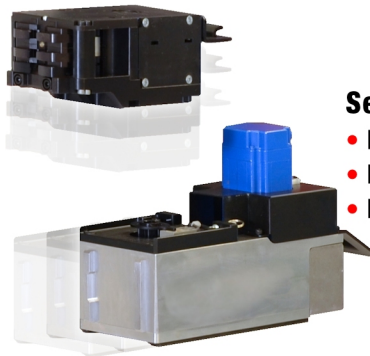
Face Gate and Seal Ejector Modules

- 24 Volt BLDC Motors
- Precision Locating Sensors



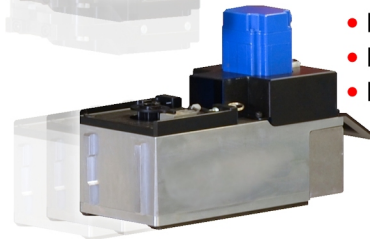
Sealer Module

- Heavy Duty Cam Driven Design
- No Adjustments Required
- No Shims Needed



Sealer Drive Module

- Multi-Use Assembly
- Billet Machined Gearing
- Heavy Duty BLDC Motor



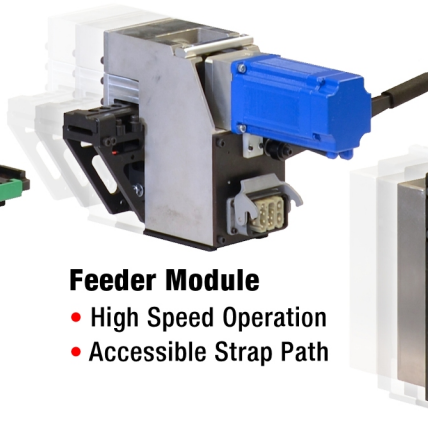
Tension Drive Module

- Integrated Drive
- High Temp Components



Feeder Module

- High Speed Operation
- Accessible Strap Path



High Tension Module

- Self Energizing Design
- Long Life Tension Wheel
- High Grade Steel Components



**CHECK OUT HOW
FAST THE M247
CAN BE SERVICED
SCAN NOW**



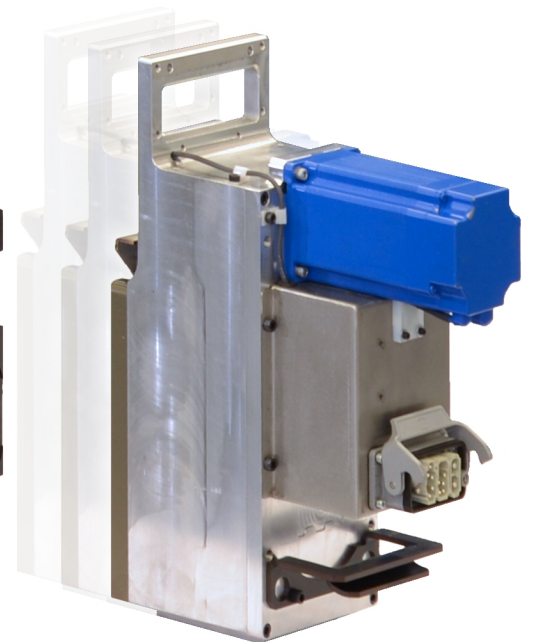
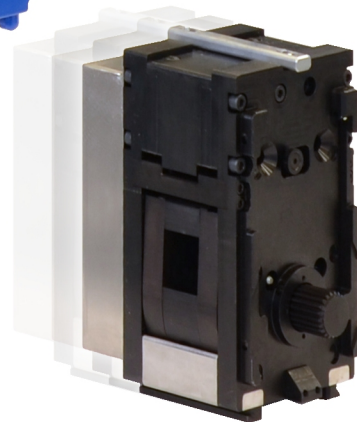
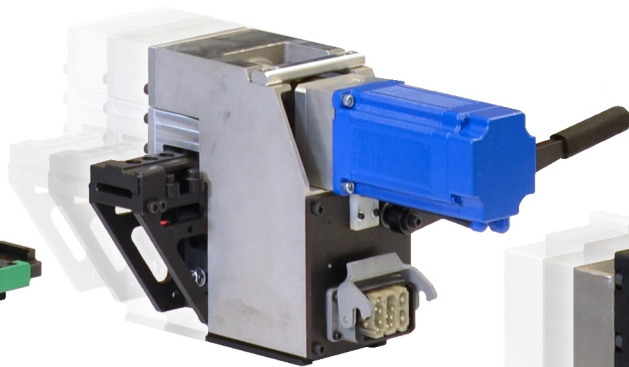
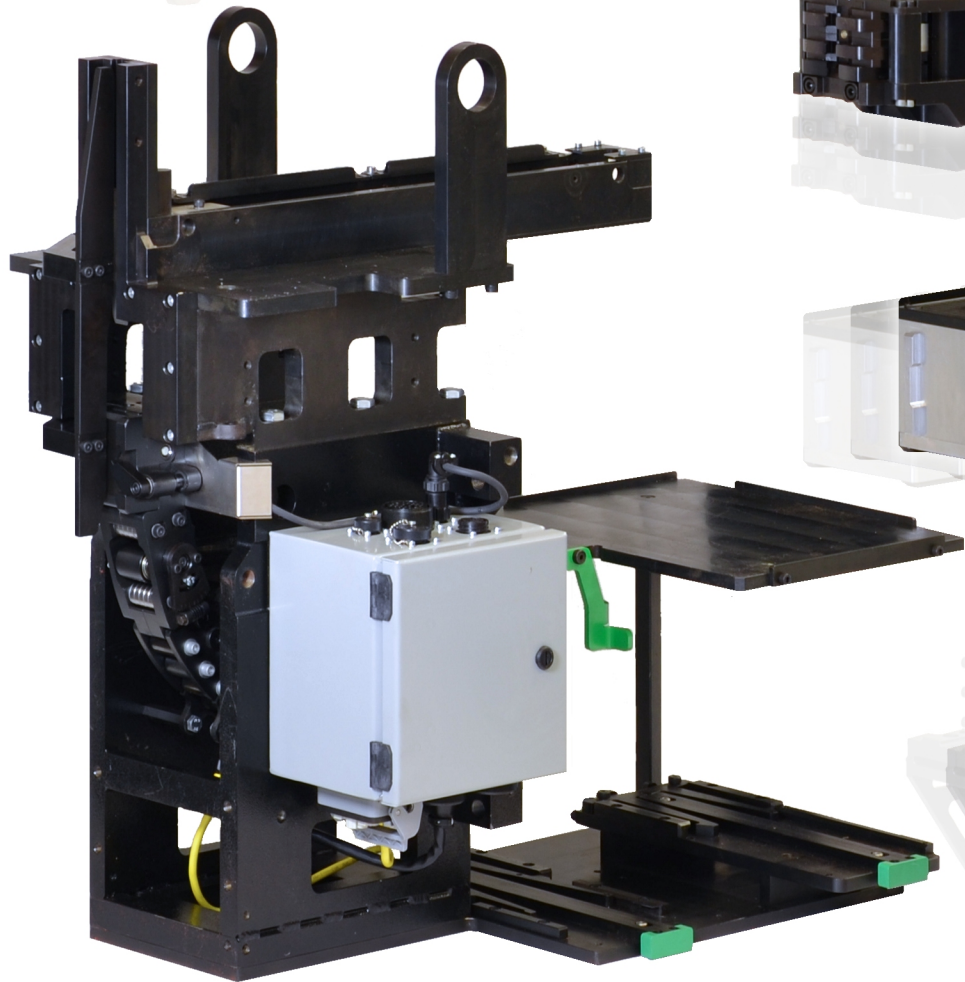
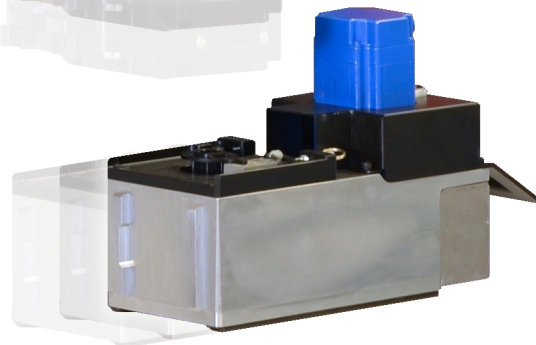
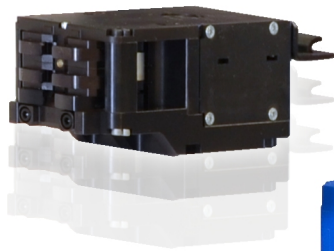
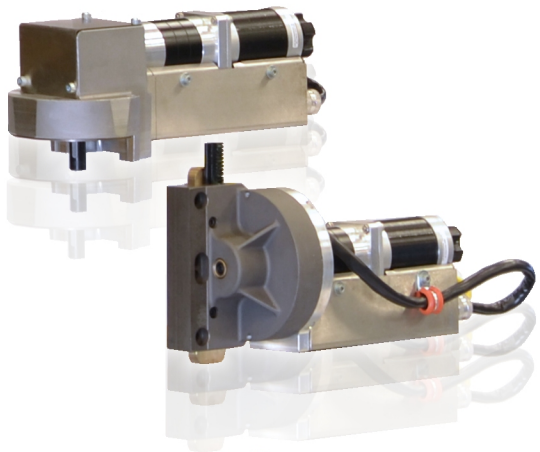
For More Information Contact Us Today:



Phone: +1 (847) 657-5322

Email: m247@signode.com

Web: www.signode.com





***Performance
Ahead of its Time***

You have the same amount of hours in your day as your competition...make minutes count!

***Unparalleled
Performance***

***Signode Leading the Industry
in Technology and Innovation***

- Quick Change Modularity*
- Rapid Replacement*
- Higher Productivity*
- Longer Life Parts*
- All Electric*
- BLDC Motors*
- Can Open Protocol*
- Swift Repair*
- On Board Intelligence*
- No Tool Access*
- Simplified Functionality*
- Signode Smart Technology*
- Simplified Installation*
- One Power Source*
- Multiple Use Parts*
- Direct Drive Modules*
- Self Engaging Tensioner*
- Precipitate Maintenance*
- Constant Tension*
- Intuitive Strap Straightener*
- Repeatable Tension*
- Reliable and Durable*

The New Standard for Strapping Heads

***See the
M247 in
Action***

